

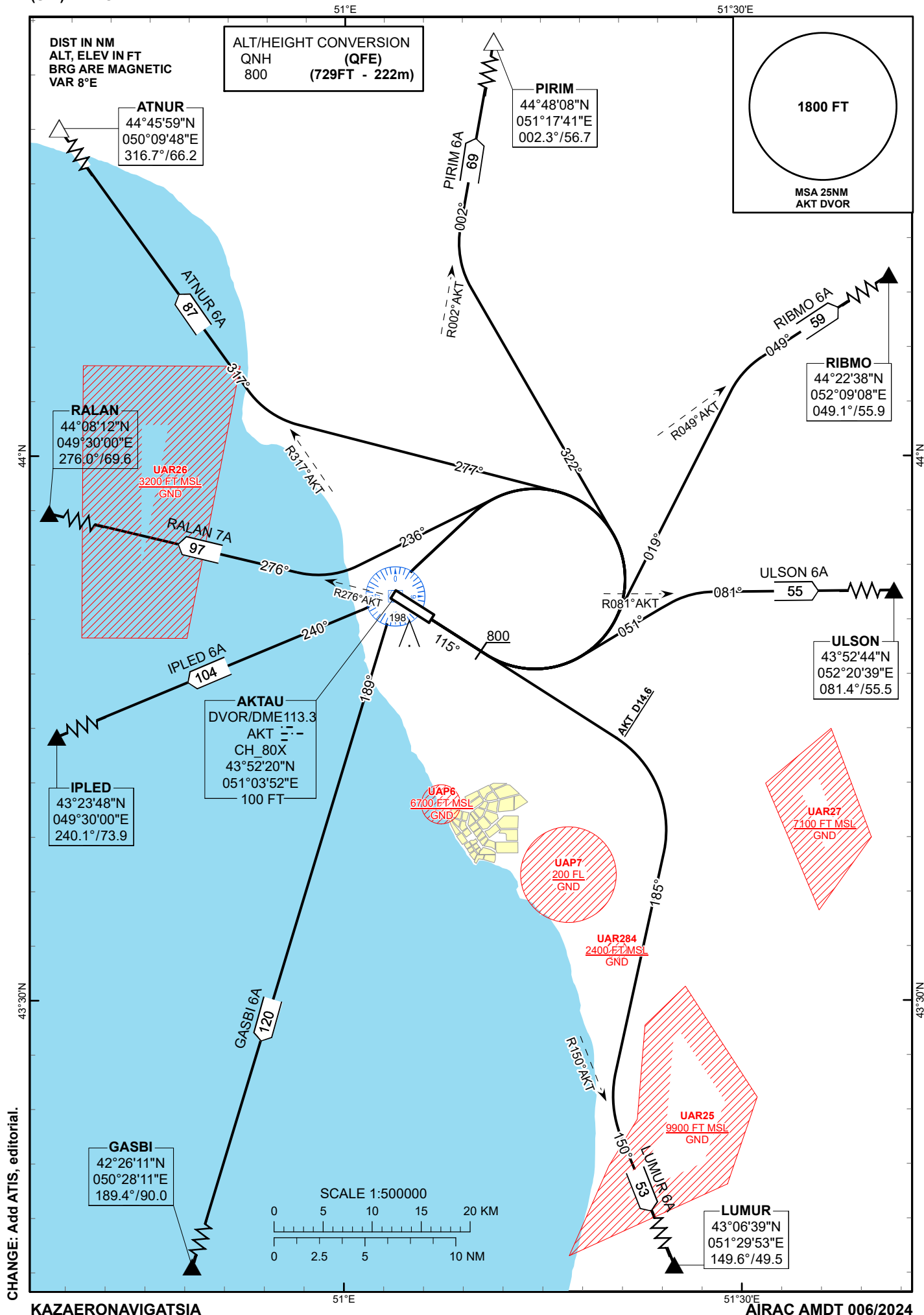
STANDARD DEPARTURE  
CHART - INSTRUMENT  
(SID) - ICAO

TRANSITION ALTITUDE  
10000 FT

AKTAU TOWER 120.7  
AKTAU ATIS (EN) 130.1  
AKTAU ATIS (RU) 126.2

ATNUR 6A GASBI 6A IPLED 6A  
LUMUR 6A PIRIM 6A RALAN 7A  
RIBMO 6A ULSON 6A

AKTAU  
RWY 11



## **STANDARD DEPARTURE ROUTES – INSTRUMENT (SID) AKTAU RWY 11**

### **PIRIM 6A**

After take-off climb straight ahead to 800 FT, turn LEFT on track 322° until intercept R 002°AKT, then proceed to PIRIM (R002.3° D56.7 AKT).  
Crossing FL at PIRIM are by ATC.

### **RIBMO 6A**

After take-off climb straight ahead to 800 FT, turn LEFT on track 019° until intercept R 049°AKT, then proceed to RIBMO (R049.1° D55.9 AKT).  
Crossing FL at RIBMO are by ATC.

### **ULSON 6A**

After take-off climb straight ahead to 800 FT, turn LEFT on track 051° until intercept R 081°AKT, then proceed to ULSON (R081.4° D55.5 AKT).  
Crossing FL at ULSON are by ATC.

### **LUMUR 6A**

After take-off turn RIGHT, but not earlier than after crossing 14.6 NM from AKT on track 185° until intercept R 150°AKT, then proceed to LUMUR (R149.6° D49.5 AKT).  
Crossing FL at LUMUR are by ATC.

### **GASBI 6A**

After take-off climb straight ahead to 800 FT, turn LEFT to AKT, after crossing AKT proceed on track 189° to GASBI (R189.4° D90.0 AKT).  
Crossing FL at GASBI are by ATC.

### **IPLIED 6A**

After take-off climb straight ahead to 800 FT, turn LEFT to AKT, after crossing AKT proceed on track 240° to IPLIED (R240.1° D73.9 AKT).  
Crossing FL at IPLIED are by ATC.

### **RALAN 7A**

After take-off climb straight ahead to 800 FT, turn LEFT on track 236° until intercept R 276°AKT, then proceed to RALAN (R276.0° D69.6 AKT).  
Crossing FL at RALAN are by ATC.

### **ATNUR 6A**

After take-off climb straight ahead to 800 FT, turn LEFT on track 277° until intercept R 317°AKT, then proceed to ATNUR (R316.7° D66.2 AKT).  
Crossing FL at ATNUR are by ATC.